



Made in Texas, U.S.A.



A product of: R & D Workshop, LLC  
2629 Natchez Court  
League City, TX 77573



Fix your driveway and sidewalk with Trim-A-Slab

### How it works:

**Trim-A-Slab** is a rubber-like strip that easily presses into the space between concrete slabs. It lies flush or below the slab surface. It is removable and can hide wires for outdoor lighting for neat and tidy holiday decorations.

Available in black, grey, or walnut



Up to 50 ft continuous lengths

### Pricing as of 2/2015 (MSRP)

Size	\$/ft	Roll size	\$/roll
1/2"	\$1.49	50 ft	\$74.50
3/4"	\$2.49	50 ft	\$124.50
1"	\$3.69	25 ft	\$92.25
1-3/8"	\$4.98	25 ft	\$124.50

### Warranty

**Trim-A-Slab** color is guaranteed for 5 years, and is guaranteed not to chip, split, crack or structurally fail for a period of 10 years pro rata. It's durable stuff!

### Trim-A-Slab Estimated Shipping Weights

product	# of coils	Est. Shipping weight (lb)
3/4" Size	1	21
	2	40
1-3/8" Size	3	59
	4	78
1" Size	1	16
	2	31
	3	45
	4	59
	5	74
1/2" Size	1	11
	2	20
	3	29
	4	38
	5	47
	6	56
	7	65
	8	74

**To order: call 281-910-5511**

### How to get an estimate of shipping cost:

Go to [www.fedex.com/ratefinder](http://www.fedex.com/ratefinder)

Use **77573** for the 'From' zip code

Enter your zip code in the 'To' zip code box

Check 'This is a residential address' if it being shipped to a residence

Enter the number of packages

Enter the weight from the table (note: we try to keep boxes at 60 lb or less)

In the 'Pickup/drop-off' dialog box, select 'Drop off at Fedex location'

Select the 'Get quick quote' button at the bottom for your estimate

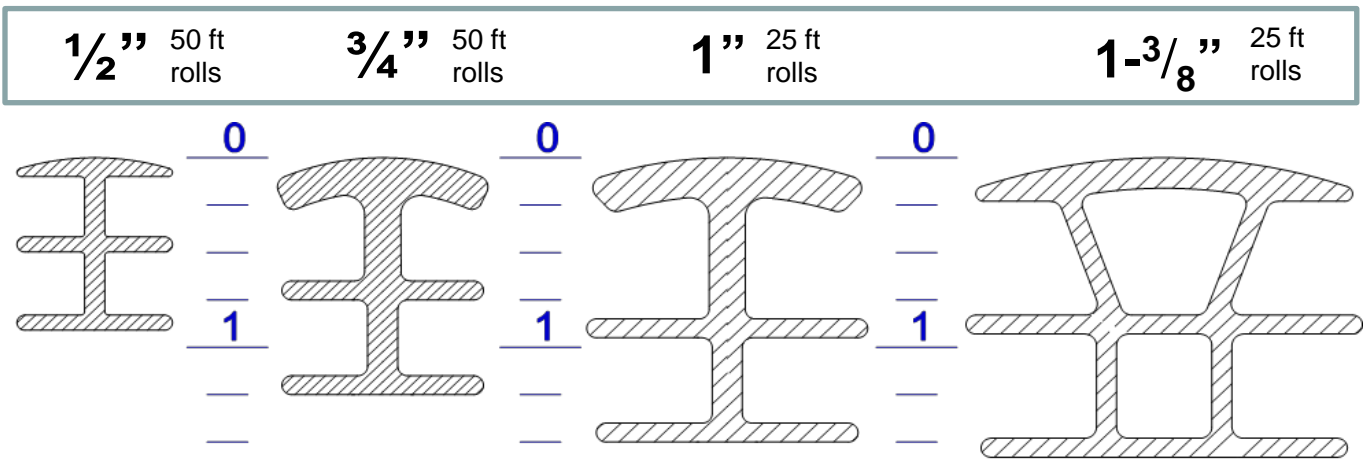
We will ship FedEx ground unless otherwise instructed

**The actual weight will be used - this is only an estimate**

[www.trim-a-slab.com](http://www.trim-a-slab.com)

# Sizing Guide

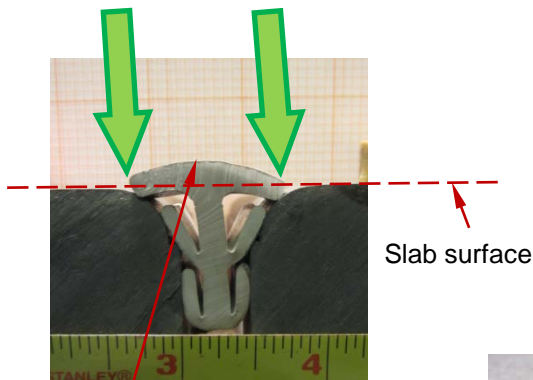
## Available sizes



Actual size cross-sections. Hold sample up to these to determine sample size

## Assessing Fit with Samples

Make Contact with the slab



Trim-A-Slab Crown



Too Small

If Trim-A-Slab falls into the gap, or sits far down (so it will collect debris, as shown at left), a larger size should be used

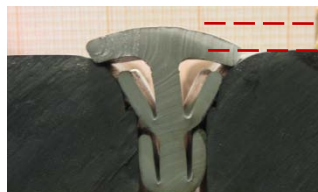


Just Right

Just right, even with surface



A product of: **R & D Workshop, LLC**  
2629 Natchez Court  
League City, TX 77573



Too Big

The Trim-A-Slab crown will sit above the surface of the slab if it is too big for the gap; it should not stick up more than  $1/8''$